



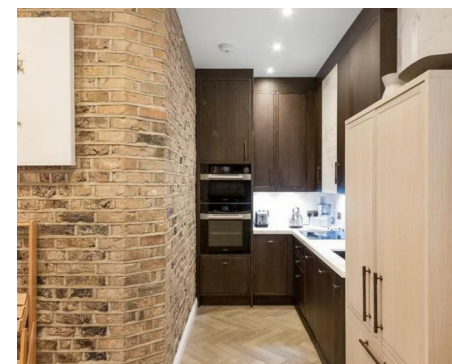
NEWINGTON
LONDON

3 Bedrooms

House - Mews

Located in London

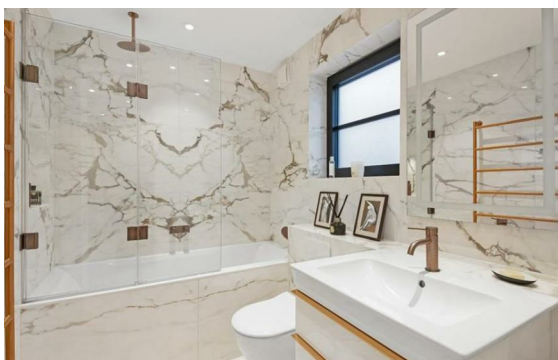
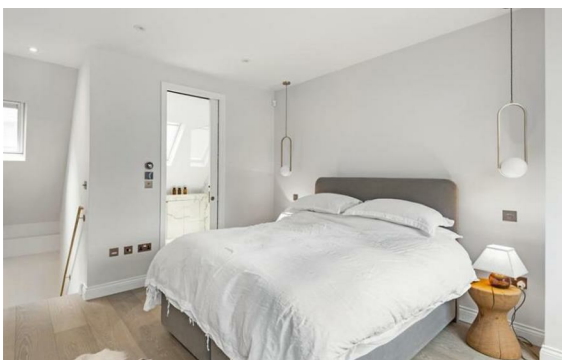
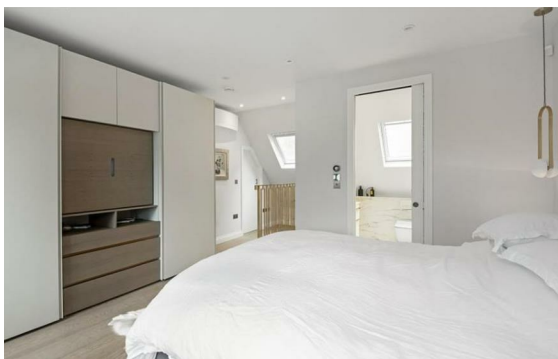
£1,215 Per Month



info@newingtonstates.com

<http://www.newingtonstates.com>

020 7724 2233



NEWINGTON LONDON

60 Upper Montagu Street

London

W1H 1SN

020 7724 2233

info@newingtonstates.com

A beautifully finished, newly refurbished three-bedroom mews house located on a private street in Paddington. Property is thoughtfully designed to maximise space and natural light, and benefits from free parking outside.

The accommodation comprises three bedrooms, two bathrooms, a reception room and a fully fitted kitchen. Ideally positioned moments from Hyde Park and within easy walking distance of Mayfair, Marylebone and Connaught Village, this quiet cul-de-sac offers a rare and highly desirable location.

EPC rating: C

Energy Efficiency Rating: C

Agents Note: Whilst every care has been taken to prepare these particulars, they are for guidance purposes only. All measurements are approximate and are for general guidance purposes only and whilst every care has been taken to ensure their accuracy, they should not be relied upon and potential buyers/tenants are advised to recheck the measurements.

<http://www.newingtonstates.com>